



Hochschule für  
Musik und Tanz Köln

## **Hochschule für Musik und Tanz Köln - Hochschulbibliothek**

### **3tes Trio für Pianoforte, Violin und Violoncello**

**Onslow, Georges**

**Wien, [1819]**

---

[urn:nbn:de:hbz:kn38-9463](https://nbn-resolving.org/urn:nbn:de:hbz:kn38-9463)



Onslos, G

3. Teil op 14

Bücherei  
statl. Hochschule für Musik  
Köln

R 1200/1-2



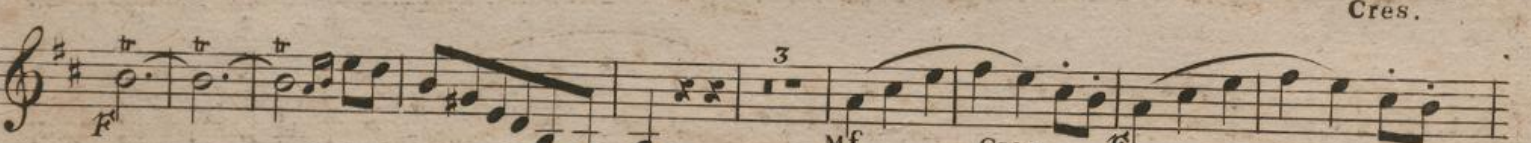
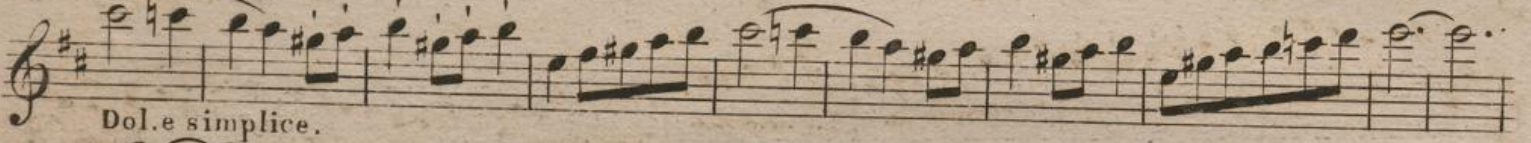
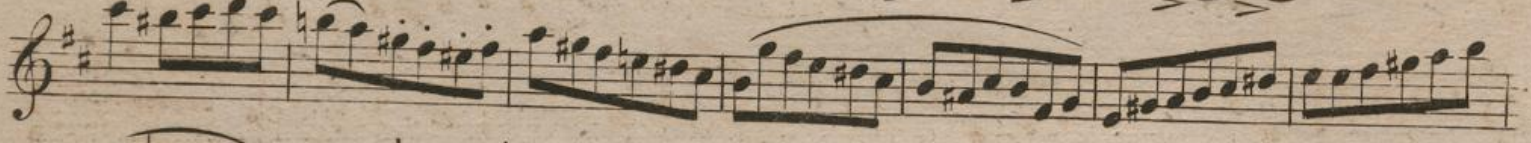
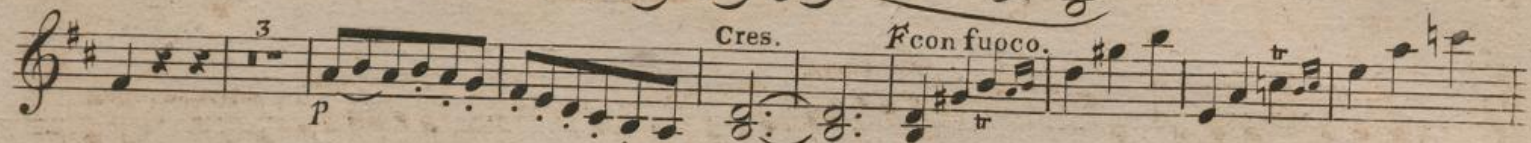
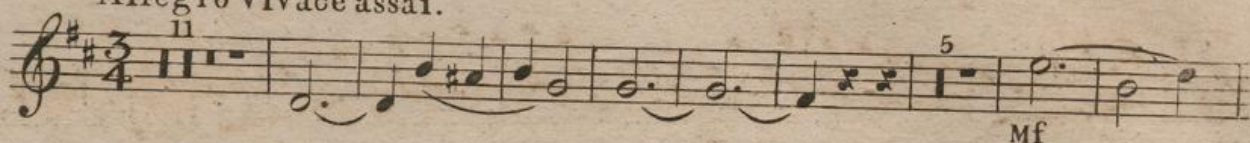
R 1200/n-2

2

V I O L I N O.

Allegro vivace assai.

TRIO III.



S.u.C. 3023.



VIOLINO.

3

Violino musical score page 3. The score is written for a violin in G major (one sharp). It consists of 13 staves of music. The notation includes various musical symbols such as treble clef, key signature, time signature (implied 4/4), notes, rests, and dynamic markings. The music features a variety of rhythmic patterns, including sixteenth and thirty-second notes, and rests. The score is marked with several dynamics and performance instructions: *Cres.* (Crescendo), *Dol.e semplice.* (Dolce e semplice), *Mf* (Mezzo-forte), *Cres. F* (Crescendo to Forte), *Cres.* (Crescendo), *FF* (Fortissimo), *Cres. cendo. F* (Crescendo to Forte), *PP* (Pianissimo), and *Ritard.e smorz.* (Ritardando e smorzando). The score ends with a double bar line and a repeat sign.

S:u:C:3023.

Bibliothek  
der  
Hochschule für Musik Köln

R 1200/1



V I O L I N O.

ANDANTE  
non troppo lento.

ANDANTE  
non troppo lento.

3

p

1

2

FF

p

Dolcissimo.

Cres.

F

pp

1

Cres - - - cen - do, sempre.

F

p

Fz

Fz

1

Dolcissimo.

S:u:C:3023.



VIOLINO.

5

Cres. - - - - - cen - - - - - do. *f* *pp*

*f* *P* *Cres.*

*Pizz.* *Arco.* *Pizz.* *Ritard. poco.*

MINUETTO  
Allegro.

*f* *p* *f* *Dim.*

*p* *f* *p* *Cres.* - - - - - cen - - - - - do. *f*

*f* *p* *f* *Dolcissimo sempre.*

*f* *p* *f* *M.D.C.*

S:u.C:3023



**FINALE.** *Presto.*

*P Solo.*

cen - - - do *F*

*pp* *p* *Cres.*

*Loco.*

*Dol.*

*3* *3* *3* *Cres.* cen - - - do *F*

*4* *pp* *Cres.* *F* *F*

*7* *8* *pp* *F*

*1* *1* *2* *3* *pp* *FF*



VIOLINO.

7

Violino musical score page 7. The score is written for a violin in G major (one sharp) and 2/4 time. It consists of 14 staves of music. The notation includes various musical symbols such as notes, rests, accidentals, and dynamic markings. The score is divided into sections by tempo and dynamics changes.

Key markings and instructions include:

- Dynamic markings:** *pp* (pianissimo), *p* (piano), *f* (forte), *ff* (fortissimo), *mf* (mezzo-forte), *pp* (pianissimo), *f* (forte), *ff* (fortissimo).
- Tempo markings:** *Tempo 1<sup>o</sup>* (Tempo 1st), *Ritard.* (Ritardando), *Dim. e ritard.* (Diminuendo e ritardando), *Loco.* (Locomotor).
- Performance instructions:** *Viol.* (Violino), *Sur la 4<sup>e</sup>* (On the 4th string), *Suivez le piano.* (Follow the piano).
- Other markings:** *cen - do.* (crescendo), *Sec.* (Segue), *tr* (trill), *3* (triple), *4* (quadruple), *5* (quintuple), *8* (octuple).

S:u.C:3023.







Onslow, G.  
3. Trio op. 14

Bücherei  
der  
staatl. Hochschule für Musik  
Köln

1 R 1200/2



## VIOLONCELLO.

Allegro vivace assai.

## TRIO III.

*pp* Legate.Cres - - - - - cen - - - - - do. *f**pp*Cres. *f**p*

Dolce e semplice.

*p* Cres - - - - - cen - - - - - do.*p* Leggiere.



# VIOLONCELLO.

3

1

1

1

3

*pp*

*F*

1

*p*

6

2

*p*

*Dol. semplice.*

3

1

*F*

1

*p*

*Cres.*

*F*

*ff*

*Cres. - - - - - cen - - -*

do.

7

*pp*

*Ritard. smorz.*

S. u. C. 3023.



## VIOLONCELLO.

ANDANTE  
non troppo lento.

3  
p

3  
2  
ff

Cres.

2  
1  
pp Stacc. mf

7  
Cres - - cen - do. p Fz Fz

Cres - - cen - - do. F

pp F p

S.u.C. 3023.



VIOLONCELLO.

5

Pizz. Arco. Pizz. Ritard.

MINUETTO  
Allegro.

Crescend. F#

Sempre dolcissimo.

1<sup>re</sup> fois. 2<sup>e</sup> fois. 1

M.D.C.

S.u.C:3023.



## VIOLONCELLO.

Presto.

FINALE.

7

*p*

Cres. - - - cen - do. *f*

*pp*

2

1

14

*p*

1

3

3

3

3

3

Cres. *f*

10

3

*f*

8

*p*

*f*

*f*

1

1

4

*pp*

3

*f*

S. u. C. 3023.



VIOLONCELLO.

7

Violoncello musical score page 7. The score is written for a cello in G major (one sharp) and 2/4 time. It consists of 14 staves of music. The notation includes various dynamics (p, pp, f, ff, mf, Cres., Dim., Ritard., Sec.), articulation (accents, trills), and fingerings (1, 2, 3, 4, 5). The piece concludes with a double bar line.

Key markings and instructions include:

- Dynamics:** *p*, *pp*, *f*, *ff*, *mf*, *Cres.*, *Dim.*, *Ritard.*, *Sec.*, *Cres. cendo.*
- Articulation:** *tr* (trill)
- Tempo/Tempo markings:** *Tempo 1<sup>o</sup>*, *Ritard.*
- Performance instruction:** *Suivez le piano*
- Fingerings:** 1, 2, 3, 4, 5

S:u:C:3023.



